

# Dental Equipment

pages 30-35

Voyager II-L Treatment Centres



# Voyager II-L

**Voyager II-L appeals** to Hygienists and Dentists alike, with equal left- and right-handed compatibility. Voyager II-L treatment centres are extremely versatile and reliable offering incredible value to all Practices. By the nature of its ambidextrous design and outstanding ergonomics, it is both a space-saving and a very efficient working environment.

## VOYAGER II-L

with unit-mounted **720-VG** operating light<sup>1</sup>  
Holder type **Air** version



## VOYAGER II-L SP<sup>2</sup> – with Assistant's console



**VOYAGER MC<sup>2</sup>**  
Air version



**VOYAGER M<sup>2</sup>**  
Air version

<sup>1</sup> 'Alternative' Voyager II-L available without unit-mounted 720-VG operating light / <sup>2</sup> Available separately  
Voyager II-L operating light options, see page 35 / Standard and Ultrasoft upholstery colour ranges, see page 56

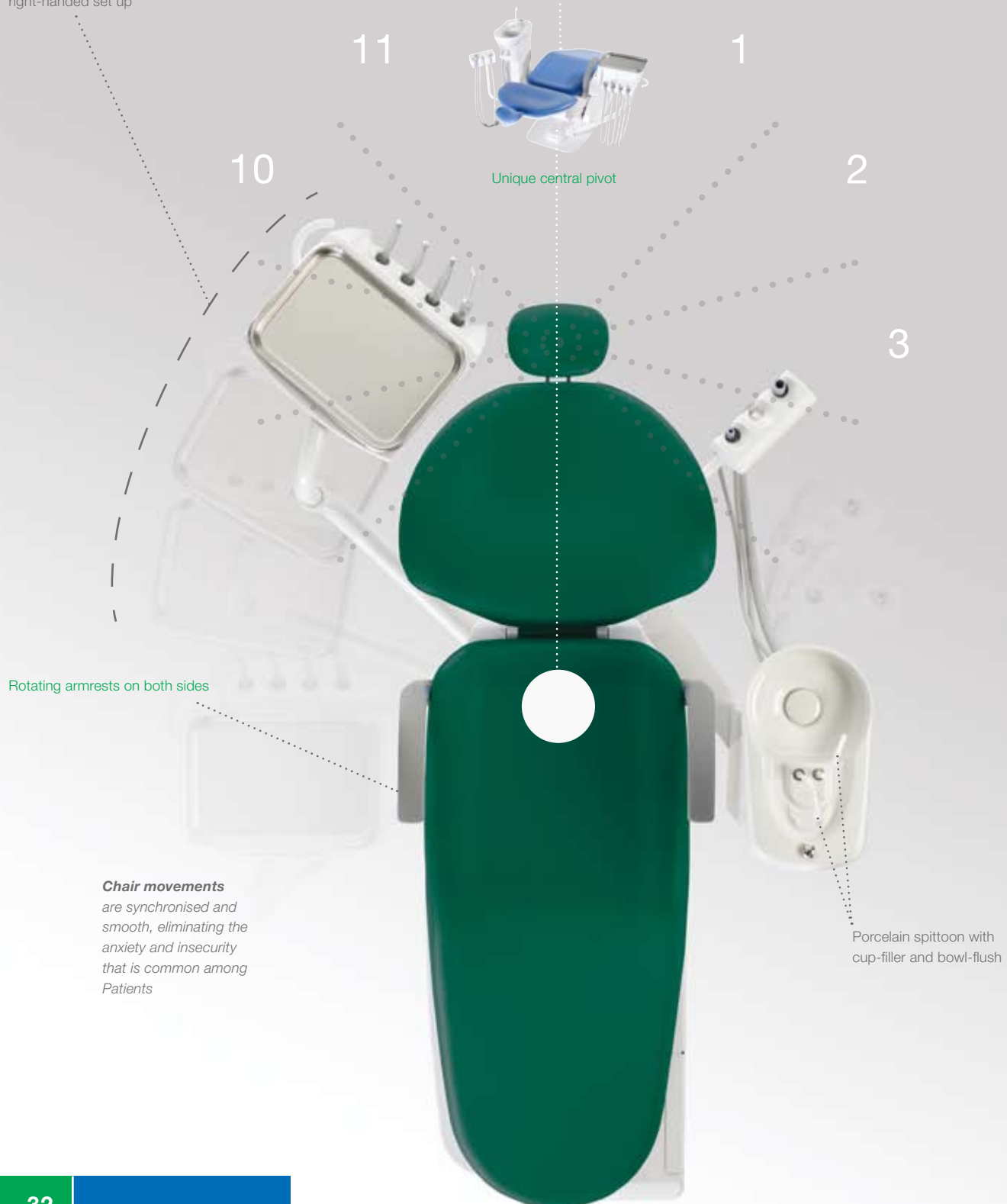
# Simplicity for versatility & value :

Designed to work for Dentists and Hygienists.



Base-mounted arm provides full Operator access from 9 to 3 o'clock

**VOYAGER II-L**  
right-handed set up



Rotating armrests on both sides

**Chair movements**  
are synchronised and smooth, eliminating the anxiety and insecurity that is common among Patients

Porcelain spittoon with cup-filler and bowl-flush

# left- & right-handed delivery :

# Voyager II-L

The *central pivot design* enables the very easy changover procedure and provides 100% equality for left- and right-handed Operators. The simplicity of this elegant solution also allows the table to be positioned behind a Patient for discretion or cleaning and preparation.

**Right-handed** set up.  
Raise chair height and release cuspidor locking pin.



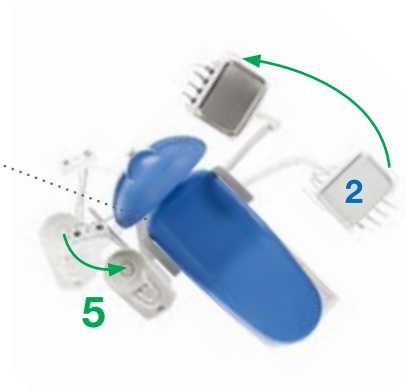
Incline chair.  
**1-2. Swing table round to left side.**



**3-4. Swing cuspidor round to right side.**



**5. Secure cuspidor in position.**  
Secure cuspidor locking lever.  
2. Rotate console.



## **60 second changover**

requires no tools, no particular strength or technique and results in identical conditions for left- and right-handed Operators.

Both the console and cuspidor easily rotate around the chair on centralised pivots below the backrest.



**Left-handed** set up.

# Ergonomic & hygienic :

*Intelligently designed for a comfortable and compact, easy-clean working environment.*

**VOYAGER II-L** – left- and right-handed compatibility

Easy-clean porcelain spittoon

Seamless upholstery

Height-adjustable Operator's console

Rotating Assistant's console

Seamless, easy-clean upholstery offers **optimum hygiene levels**

Rotating armrests on both sides

Improved Voyager II-L chair includes lumbar support and extra padding for superior Patient comfort

**Unique, centrally-mounted delivery system** offers wonderful versatility on a perfectly balanced arm to ensure zero drift during operation. The treatment centre remains **compact in all positions** making comfortable operation possible in compact environments.

equipped & installed :

# Voyager II-L

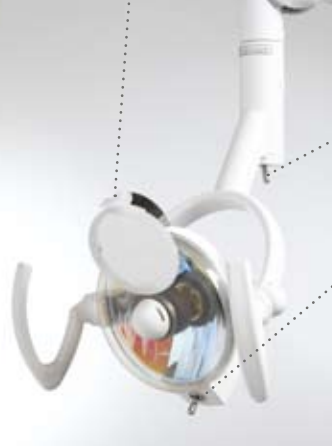
**NDL-VG LIGHT** – Unit-mounted<sup>1</sup>



**720-VG LIGHT** – Unit-mounted<sup>1</sup>



Retractable Patient mirror



Toggle switch for ON/OFF function and Composite Curing Safe Mode

Toggle switch for two light intensity settings:  
Low – 18,000 Lux  
High – 28,000 Lux

4200 Kelvin

Stainless steel, removable tray on non-slip silicon mat and (optional) control panel



**VOYAGER MC** and **VOYAGER M 'A'** versions

Operator's console and control panel<sup>2</sup> for programmable chair movements, including two preset options, Last-Position Memory, Auto-Return and manual control



Vacuum solids collector is easily accessed

Chrome flush button



**VOYAGER II-L SP** with **VOYAGER MC**

<sup>1</sup> Ceiling-mounted NDL and 700 Series lights also available, see 'Operating Lights' on pages 48-51 / <sup>2</sup> Optional control panel