

C50

FULL HD CAMERA



**Technical
datasheet** ●

ACTEON

C50 Camera full HD



Product data

Camera Specifications

Sensor	CMOS
Resolution	1920 x 1080px
Sensitivity	2 lux
Frame per second (FPS)	25 – 30
Aspect ratio	16/9
Lighting	6 white LEDs and 2 blue LEDS
Focus adjustment	Automatic focus or Single focus
4 Visions mode	DAYLIGHT mode If option enabled: DAYLIGHT+ mode, PERIO mode and CARIO mode
Depth of field	From portrait to macro
Image capture	Capture button or footswitch (optional)
Angle of view	75°
Cable length	3m
USB output	3.0
Consumption	4.5W max
Handpiece dimensions	L: 200; W: 30; H: 24mm
Handpiece weight	100g
International Protection Marking (IP)	Dust & waterproofness protection IP53

Configurations

Windows® configuration

	Minimal configuration	Recommended configuration
Operating system	Windows® 10 PRO	Windows® 10 PRO
Processor	Intel® core i5 – At least 4 cores	Intel® core i7 or plus – at least 4 cores
Memory	8 GB	16 GB or more
Hard disk	250 GB	1 TB or more
USB port	USB 3.0 Super Speed*	USB 3.0 Super Speed*
Video board	1 GB unshared RAM	Chipset Nvidia or ATI / 2 GB of unshared RAM. Memory compatible with DirectX 9 or higher
USB chipset	Intel or NEC® / RENESAS®	Intel or NEC® / RENESAS®
Screen resolution	1920 x 1080	1920 x 1080 or better

Mac® configuration

	Minimal configuration	Recommended configuration
Computer	MacBook® Pro 13" or iMac® 21.5	iMac® 27"
Operating system	MacOS® X Catalina	MacOS® X Big Sur
Processor	Intel® core i5 – At least 4 cores	Intel® core i7 or plus – at least 4 cores
Memory	8 GB	16 GB
Hard disk	250 GB	1 TB or more
USB port	USB 3.0 Super Speed*	USB 3.0 Super Speed*
Screen resolution	1920 x 1080	1920 x 1080 or better

*The C50 must be connected to a USB root alone to ensure the maximum bandwidth is reserved for it.

C50
 Camera full HD



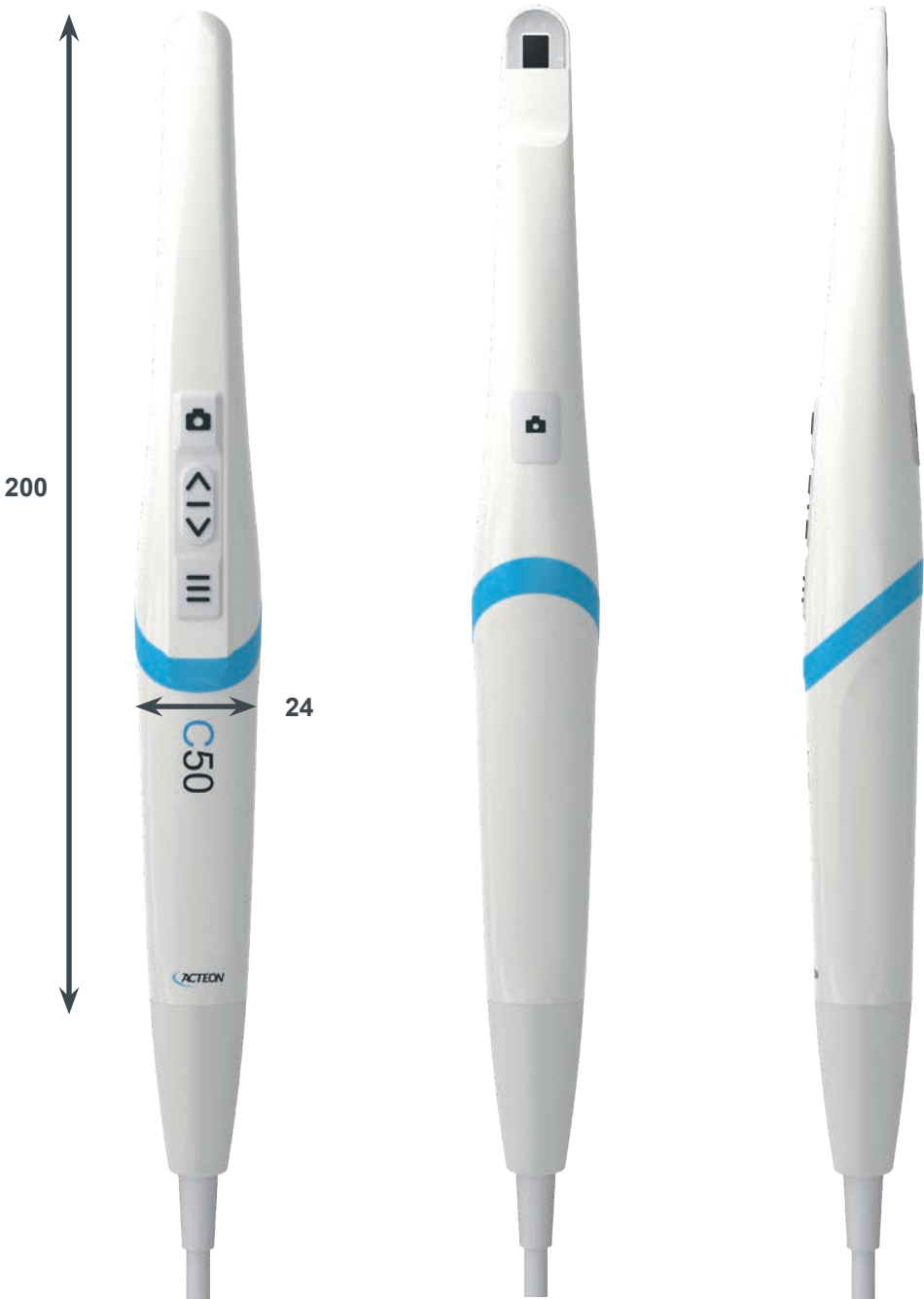
Environmental conditions

Storage temperature	-20°C / +45°C
Operating temperature	+10°C / 40°C
Relative humidity	10% to 90%
Transport, storage and operating atmospheric pressure	700hPa to 1060hPa
Electrical classification (IEC 60601-1)	Class 2
Applied part	Type BF
Photobiological risk group (IEC 62471)	Group 1
This medical device complies with the following international standards	IEC 60601-1, IEC 60601-1-2, IEC 60601-2-18; IEC 60601-1-6

Imaging software

Standard: Acteon Imaging Suite – professional dental imaging software.
 Please refer to Imaging Software Product Data for specific information.

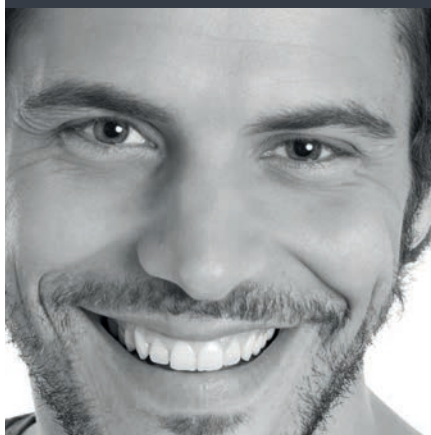
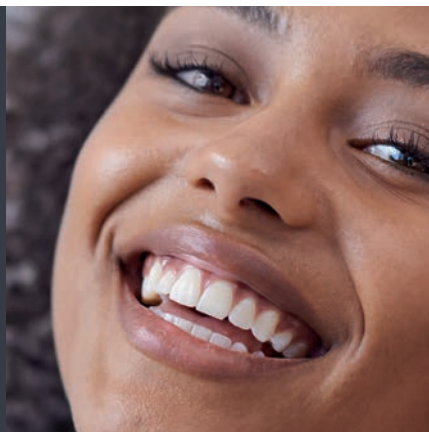
Dimensions
 (all quotes in mm)



SOPRO

A company of ACTEON® Group

**ZAC Athélia IV
Avenue des Genévriers
13705 LA CIOTAT cedex**



Tel. +33 (0) 442 980 101

Fax. +33 (0) 442 717 690

info@acteongroup.com



Class I medical devices for dental care. CE. For professional dental use only.
These medical devices are not refunded by health insurance organizations. Read carefully the instructions before use.

Manufacturer: Sopro® ACTEON® Group (France)

Creation date: October 2022

Non contractual document - Ref. 707257 A - 10/2022 - Copyright © 2022 SOPRO. All rights reserved. No information or part of this document may be reproduced or disclosed in any format without the prior authorisation of SOPRO.

